

SOLID BEECH

Let op: digitale kleuren kunnen afwijken met de werkelijkheid



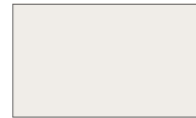
MAF01
Faggio laccato grigio siliceo
Silica grey lacquered beech



MAF22
Verniciato azzurro-grigio
Bluegray



MAF21
Verniciato verde salvia
Sage green stained beech



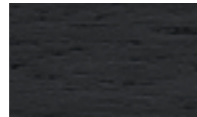
MAFLG6
Laccato bianco opaco
White matt lacquered



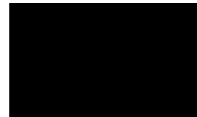
MAFGV
Faggio naturale
Natural beech



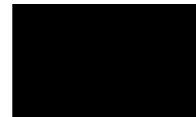
MAF10
Faggio grigio basalto
Basalt grey



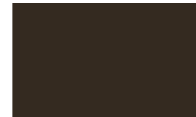
MAF09
Faggio nero grafite
Graphite black



MAF104
Faggio verniciato nero
Black stained beech



MAF02
Faggio nero laccato goffrato
Embossed Black lacquered beech



MAF24
Faggio laccato nero
Black lacquered beech



MAF25
Faggio laccato grigio
Grey lacquered beech



MAF26
Faggio laccato verde
Green lacquered beech

SOLID ASH

Let op: digitale kleuren kunnen afwijken met de werkelijkheid



MAFR23
Frassino verniciato cipria
Cipria stained



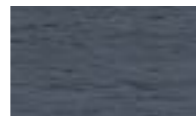
MAFR22
Frassino verniciato azzurro-grigio
Bluegray stained



MAFR21
Frassino verniciato verde salvia
Sage green stained beech



MAFR01
Frassino naturale
Natural



MAFR10
Frassino verniciato grigio basalto
Basalt grey stained



MAFR09
Frassino verniciato nero grafite
Graphite black stained

FULL-GRAIN LEATHER

Let op: digitale kleuren kunnen afwijken met de werkelijkheid



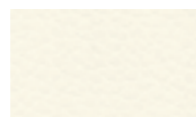
PR
Red



PC
Cuoio



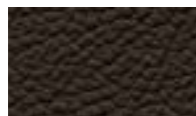
PB
Ivory



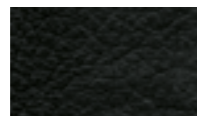
PW
White



PT
Dove grey



PTM
Dark brown



PN
Black

FELT

Let op: digitale kleuren kunnen afwijken met de werkelijkheid

100% Wool



F009



F008



F015



F003



F011

ECO LEATHER

Let op: digitale kleuren kunnen afwijken met de werkelijkheid

Composition: 76%PVC - 2%PU - 22%PES
Width: 140 cm
Weight: g/m² 540 +/-10
Cycles (ISO 5470-2): 60000
Colour fastness to dry rubbing (ISO 105-X12): 4/5
Colour fastness to wet rubbing (ISO 105-X12): 4/5
Colour fastness to light (Xenotest - blu scale) (ISO 105-B02): 6
Adhesion (ISO 241): > 40
Tensile strenght (UNI EN ISO 1421): 600 long.
Tensile strenght (UNI EN ISO 1421): 310 trasv.
Elongation at break % (UNI EN ISO 1421): 57 long.
Elongation at break % (UNI EN ISO 1421): 120 trasv.
Tear strenght (UNI EN ISO 4674): 50 long.
Tear strenght (UNI EN ISO 4674): 50 trasv.
Cycles (UNI 4818-13): 100000
Fireproof test: EN 1021-2:2006 / UNI 9175 classe 1 IM / BS5852-1:1979 part 1 - TB 117:2013



SE1007



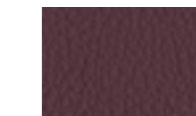
SE1008



SE1009



SE1019



SE1020



SE1010



SE1022



SE1014



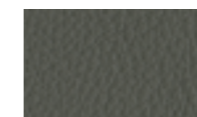
SE1021



SE1013



SE1011



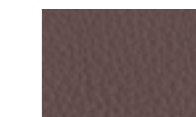
SE1012



SE1023



SE1006



SE1005



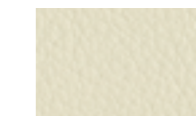
SE1018



SE1003



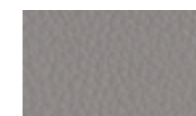
SE1004



SE1002



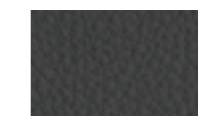
SE1001



SE1015



SE1024



SE1016



SE1017

REVIVE 1 KVADRAT

Let op: digitale kleuren kunnen afwijken met de werkelijkheid

Designer: Georgina Wright
Composition: 100% Recycl. polyester FR
Height: 140 cm
Selvedge:
Weight: 420 g/lin.m
Light resistance: 5-7 (ISO 1-8)
Abrasion: 80.000 Martindale
Colour: there may be slight differences
The environment: reduced environmental impact

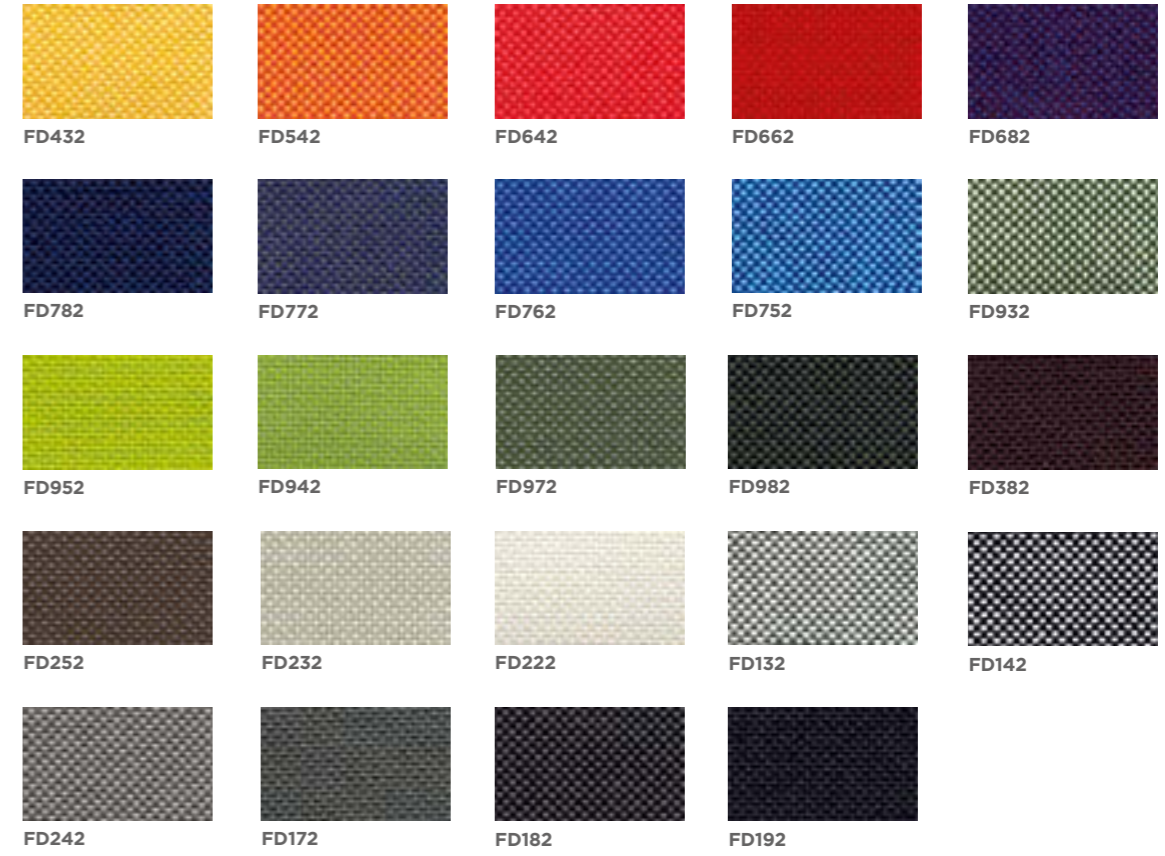
Fireproof test
BS 5852 part 1, ig. s. 0
DIN 4102 B1
EN 1021-1/2
IMO FTP Code 2010 Part 8
NF D 60 013 with treatment
UNI 9175 11M
US Cal. Bull. 117-2013
ÖNORM B1/ Q1

FIELD KVADRAT

Let op: digitale kleuren kunnen afwijken met de werkelijkheid

Designer: Alfredo Häberli
Composition: 100% Trevira CS
Height: 140 cm
Selvedge:
Weight: 430 g/mtl
Light resistance: 6-7 (ISO 1-8)
Abrasion: 100.000 Martindale
Colour: there may be slight differences
The environment: reduced environmental impact-

Fireproof test
BS 5852 Crib 5
BS 5852 part 1, ig. s. 0
DIN 4102 B1
EN 1021-1/2
FAR 25.853
IMO FTP Code 2010 Part 8
NF D 60 013
NF P 92 507 M1
ÖNORM B1/ Q1
SN 198 898 5.2
UNI 9175 11M
UNI 9177 Classe 1
US Cal. Bull. 117-2013



UMAMI KVADRAT

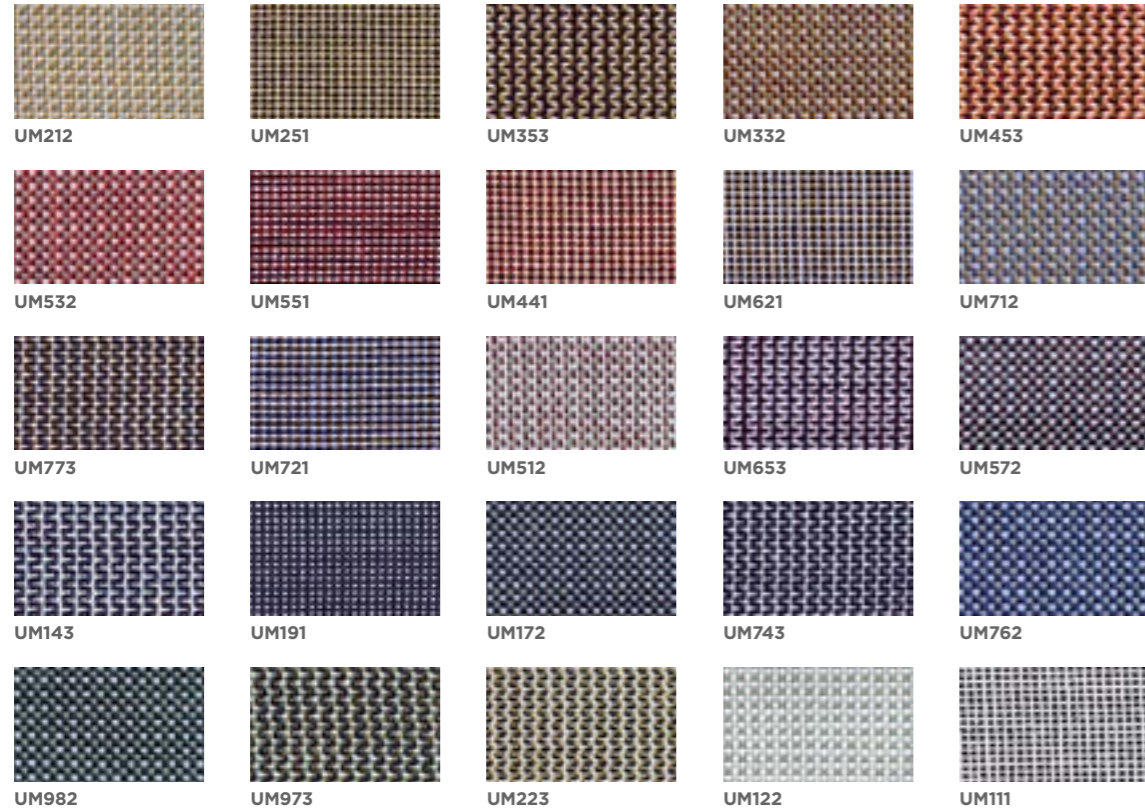
Let op: digitale kleuren kunnen afwijken met de werkelijkheid

Designer: Louise Sigvardt
Composition: 90% new wool worsted, 10% nylon
Height: 140 cm
Selvedge:
Weight: Umami 420 g/lin.m -
Umami 2 510 g/lin.m - Umami 3 470 g/lin.m
Light resistance: 6-7 (ISO 1-8)

Abrasion: Umami 80.000 Martindale
Umami 2 100.000 Martindale
Umami 3 60.000 Martindale
Colour: there may be slight defferences
The enviroment: natural fibres / renewable resource

Fireproof test
AS/NZS 3837, class 2
BS 5852 Crib 5 with treatment
BS 5852 part 1
EN 1021-1/2

IMO FTP Code 2010 Part 8
NF D 60 013
UNI 9175 11M
US Cal. Bull. 117-2013



RECHECK KVADRAT

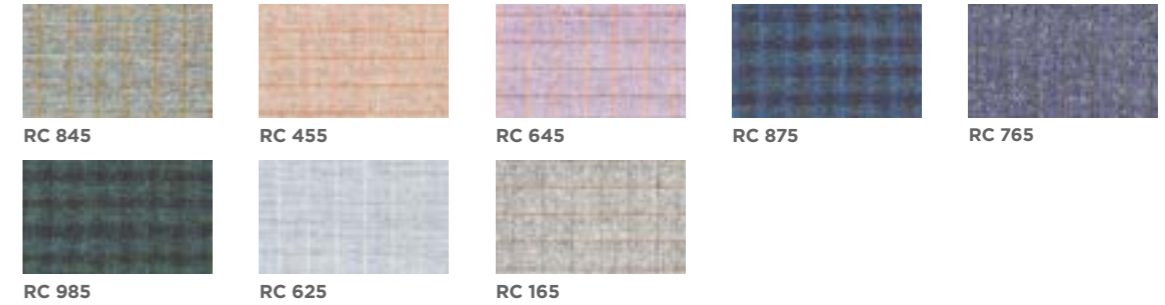
Let op: digitale kleuren kunnen afwijken met de werkelijkheid

Designer: Giulio Ridolfo
Composition: 90% WO, 10% nylon
Width: 140 cm
Selvedge: ↓
Weight: 420 g/mtl

Light resistance: 5-7 (ISO 105-B02)
Abrasion: 100000 Martindale
Colour: there may be slight differences.
The environment: Natural fibres / renewable resource

Fireproof test
AS/NZS 1530.3
AS/NZS 3837 class 2
BS 5852 Crib 5 with treatment
BS 5852 part 1
EN 1021-1/2

IMO FTP Code 2010:Part 8
NF D 60 013
NFPA 260
UNI 9175 11M
US Cal. Bull. 117-2013



STEELCUT TRIO 3 KVADRAT

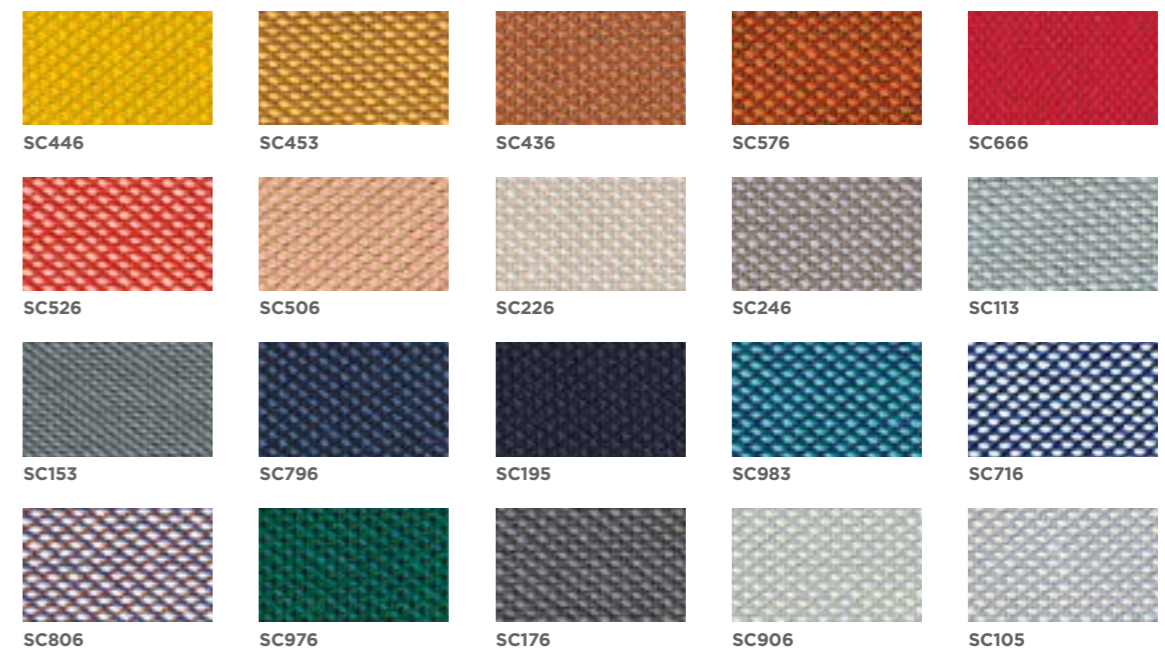
Let op: digitale kleuren kunnen afwijken met de werkelijkheid

Designer: Dijkemeijer & Ridolfo
Composition: 90% Wool, 10% Nylon
Height: 140 cm
Selvedge:
Weight: Umami 770 g/lin.m
Light resistance: 6-7 (ISO 1-8)

Abrasion: Umami 100.000 Martindale
Colour: there may be slight differences
The environment: natural fibres / renewable resource

Fireproof test
AS/NZS 3837, class 2
BS 5852 Crib 5 with treatment
BS 5852 part 1
DIN 4102 B1
EN 1021-1/2
IMO FTP Code 2010 Part 8

NF D 60 013
NFPA 260
SN 199 899 5.5 with FR treatment
UNI 9175 11M
US Cal. Bull. 117-2013
ONORM B1/G1



CANVAS KVADRAT

Let op: digitale kleuren kunnen afwijken met de werkelijkheid

Designer: Giulio Ridolfo
 Composition: 90% New wool worsted, 10% Nylon
 Height: 140 cm
 Selvage: ↑
 Weight: 480 g/mtl
 Light resistance: 6-7 (ISO 1-8)
 Abrasion: 100000 Martindale
 Colour: there may be slight differences
 The environment: In compliance with EU environmental regulations

Fireproof test
 AS/NZS 1530.3
 BS 5852 (g. s. 2-3)
 DIN 4102 B2
 EN 1021-1/2
 IMO A.652(16)
 NF D 60 013
 NFPA 260
 UNI 9175 11M
 US Cal. Tech. Bull. 117
 ÖNORM BI/G1



CV124



CV134



CV154



CV174



CV414



CV446



CV546



CV556



CV424



CV254



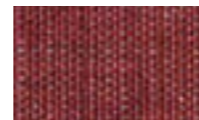
CV454



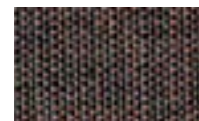
CV576



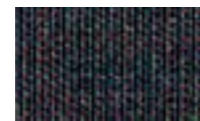
CV644



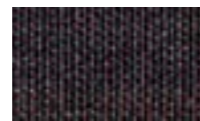
CV654



CV674



CV364



CV374



CV694



CV684



CV786



CV794



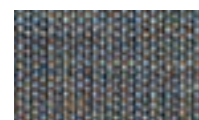
CV666



CV746



CV726



CV734



CV984



CV836



CV946



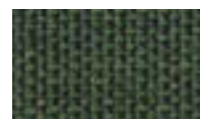
CV954



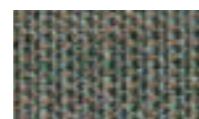
CV926



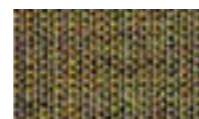
CV974



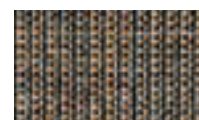
CV996



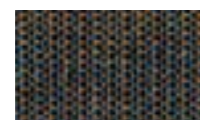
CV936



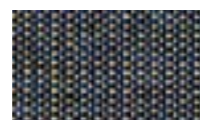
CV964



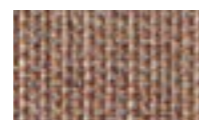
CV264



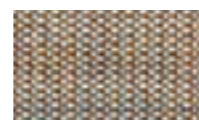
CV764



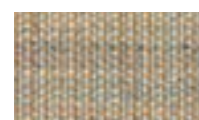
CV854



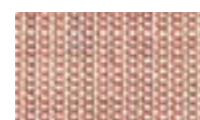
CV356



CV244



CV224



CV614



CV716



CV216



CV114

DIVINA MELANGE 2 KVADRAT

Let op: digitale kleuren kunnen afwijken met de werkelijkheid

Designer: Finn Skódt
 Composition: 100% Wool
 Height: 150 cm
 Selvedge: ↓
 Weight: 840 g/mtl
 Light resistance: 5-7 (ISO 105-B02)
 Abrasion: 45000 Martindale
 Colour: there may be slight differences.
 The environment: Natural fibres / renewable resource



Fireproof test
 AS/NZS 1530.3
 BS 5852 ig. s. 5
 BS 5867, part 2, type B
 DIN 4102 B2, ÖNORM B1/Q1
 EN 1021-1/2
 EN 13501, C-s1, d0, glued
 IMO A.652(16)
 NF D 60 013
 NFPA 260
 UNI 9175, 11M
 US Cal. Tech. Bull. 117



DM421



DM471



DM521



DM571



DM671



DM721



DM871



DM180



DM260



DM220

DIVINA 3 KVADRAT

Let op: digitale kleuren kunnen afwijken met de werkelijkheid

Designer: Finn Skódt
 Composition: 100% Wool
 Height: 150 cm
 Selvedge: ↓
 Weight: 840 g/mtl
 Light resistance: 5-7 (ISO 105-B02)
 Abrasion: 45000 Martindale
 Colour: there may be slight differences.
 The light colours may contain dark fibres.
 The environment: Natural fibres / renewable resource



Fireproof test
 AS/NZS 1530.3
 BS 5852 ig. s. 5
 BS 5867, part 2, type B
 DIN 4102 B2, ÖNORM B1/Q1
 EN 1021-1/2
 EN 13501, C-s1, d0, glued
 IMO A.652(16)
 NF D 60 013
 NFPA 260
 UNI 9175, 11M
 US Cal. Tech. Bull. 117



DV426



DV542



DV623



DV696



DV684



DV676



DV893



DV886



DV936



DV356



DV236



DV106



DV171



DV173



DV191

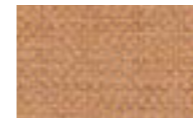
FIORD KVADRAT

Let op: digitale kleuren kunnen afwijken met de werkelijkheid

Designer: Louise Sigvardt & Tone Barnung
 Composition: 92% Wool, 8% nylon
 Width: 140 cm
 Selvedge: ↓
 Weight: 500 g/mtl
 Light resistance: 5-7 (ISO 105-B02)
 Abrasion: 60000 Martindale
 Colour: there may be slight differences.
 The environment: Natural fibres / renewable resource



Fireproof test
 BS 5852 Crib 5 with treatment
 BS 5852 part 1
 DIN 4102 B2
 EN 1021-1/2
 IMO FTP Code 2010 Part 8
 NF D 60 013
 UNI 9175 11M
 US Cal. Bull. 117-2013
 AS/NZS 3837, class 2



FO 451



FO 521



FO 581



FO 771



FO 751



FO 101



FO 271



FO 171



FO 971



FO 991



FO 191

HARALD 3 KVADRAT

Let op: digitale kleuren kunnen afwijken met de werkelijkheid

Designer: Raf Simons & Fanny Aronsen
 Composition: 100% Cotone
 Larghezza: 140 cm
 Cimosa: ↓
 Peso: 520 g/mtl

Resistenza alla luce: 5-6 (ISO 105-B02)
 Abrasion: 100000 Martindale
 Colore: possono riscontrarsi lievi differenze
 L'ambiente: Fibre naturali / risorsa rinnovabile

Fireproof test
 AS/NZS 1530.3
 BS 5852 ig. s. 5
 BS 5867, part 2, type B
 DIN 4102 B2, ÖNORM B1/Q1
 EN 1021-1/2

EN 13501, C-s1, d0, glued
 IMO A.652(16)
 NF D 60 013
 NFPA 260
 UNI 9175, 11M
 US Cal. Tech. Bull. 117



HA 443



HA 512



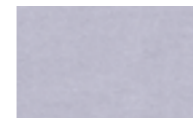
HA 343



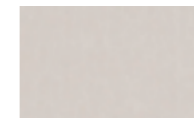
HA 182



HA 952



HA 133



HA 212



HA 283



HA 982



HA 582

GLOW KVADRAT

Let op: digitale kleuren kunnen afwijken met de werkelijkheid

Designer: Dijkmeijer & Ridolfo
 Composition: 90% Wool, 10% nylon
 Height: 140 cm
 Selvedge: ↔
 Weight: 360 g/mtl

Light resistance: 6-7 (ISO 105-B02)
 Abrasion: 60000 Martindale
 Colour: there may be slight differences.
 The light colours may contain dark fibres.
 The environment: In compliance with EU environmental regulations

Fireproof test
 BS 5852 ig. s. 3
 EN 1021-1/2
 IMO 2010 p. 8
 NF D 60 013
 UNI 9175, 11M
 US Cal. Tech. Bull. 117
 Önorm B1/Q1



PATIO KVADRAT

Let op: digitale kleuren kunnen afwijken met de werkelijkheid

Designer: Karina Nielsen Rios
 Composition: 100% Trevira CS
 Height: 140 cm
 Selvedge: ↔
 Weight: 560 g/lin.m

Light resistance: 7 (ISO 105-B02)
 Abrasion: 50000 Martindale
 Colour: there may be slight differences.
 The light colours may contain dark fibres.
 The environment: In compliance with EU environmental regulations

Fireproof test
 BS 5852 ignition source 5
 BS 5852 part 1 ignition source 0
 DIN 4102 B1, EN 1021-1/2
 IMO FTP Code 2010 Part 8
 NF D 60 013
 NF P 92 507 M1
 UNI 9175 11M
 US Cal. Bull. 117-2013
 ÖNORM B1/Q1



FLASH NO-SHRINK

Let op: digitale kleuren kunnen afwijken met de werkelijkheid

Composition: 100% PP
 Total width: 140 cm (UNI EN 1773)
 Weight per linear meter: 450 g/LM (± 4%)
 Weight per square meter: 320 g/m² (± 4%) (UNI 5114)
 (*Martindale*) Abrasion resistance: Rubs: 70000 End point (ISO 12947-2)
 Pilling resistance: 5 (ISO 12945-2)

Tensile strength: Length 1398,87 - Width 1091,41 (ISO 13934-1)
 Maximum elongation: Length 48,23% - 26,33% Width (ISO 13934-1)
 Seam slippage (6 mm): Length >200 - Width >200 (ISO 13936-1)
 Colour fastness rubbing (dry): staining CO 4/5 (ISO 105-X12)
 Colour fastness rubbing (wet): staining CO 4/5 (ISO 105-X12)
 Colour fastness artificial light: Colour change: light 5, medium 4, dark 5 (ISO 105 B02)



NO-SHRINK



FL501



FL500



FL301



FL305



FL300



FL310



FL900



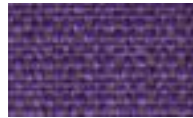
FL001



FL005



FL003



FL004



FL002



FL705



FL700



FL707



FL710



FL810



FL804



FL800



FL807



FL111



FL400



FL101



FL100



FL402



FL408



FL600



FL601



FL409



FL403



FL407



FL602



FL405



FL200